

PV-259L_T/TF
TV-FM/Video/Audio PCI Capture Card
User's Manual

A. Pre-installation

- 1. PV-259L_T/TF Product Specification 2
- 2. PV-259L_T/TF Hardware Equipment 2
- 3. PV-259L_T/TF Connection 2
- 4. Notice Before Installation 4
 - 4.1 About Hardware 4
 - 4.2 About Software 4

B. Installation

- 1. How to install the hardware of PV-259L_T/TF 5
- 2. Installing the driver of PV-259L_T/TF for Windows TM2000/XP 5

Version : 1.0
Date : 2004/04/21

A. Pre-installation

Congratulation ! You have purchased our PV-259L_T/TF, which using high quality chipset will bring you the best and fast performance.

1. PV-259L_T/TF Product Specification :

PV-259L_T/TF	
Interface	PCI 2.1/2.2
Video Input	1*RF Input (75) 1*CVBS Input (75) 1*S-Video Input
Audio Input	1*3.5mm Phone Jack Audio Input 1*FM Radio Cable In (For PV-259L_TF only)
Audio Output	1*3.5mm Phone Jack Audio Output
Video Format	NTSC/PAL/SECAM
Software	1.Win 2K/XP(WDM) Driver 2.Application Software
System Requirement	Pentium 2.0Ghz or higher level PC 256MB RAM 2X CD-ROM Windows 2K/XP OS 16bit or higher level Sound-Card. PCI/AGP VGA card & Monitor

2. PV-259L_T/TF Hardware Equipment :

- . PV-259L_T/TF card 1pcs
- . Software CD 1pcs
- . User's Manual 1pcs
- . Transfer Cable(Minidin 7 pins to Composite/S-Video/Audio-In) 1pcs
- . USB IR Receiver 1pcs
- . Audio Connector 1pcs
- . FM Connector 1pcs
- . Remote Controller 1pcs

Accessories Description & Attach Graphs :

PV-259L_T/TF Card



USB IR Receiver



Transfer Cable



USB IR Receiver



Audio Connector



FM Connector



4. Notice Before Installation :

4.1 About Hardware :

PV-259L_T/TF is a PCI interface used TV/Video capture card. Please confirm that still have available PCI & USB ports on M/B.

4.2 About Software :

Please make sure if Microsoft™ DirectX9.0 or higher version already been installed in Windows™2K/XP.

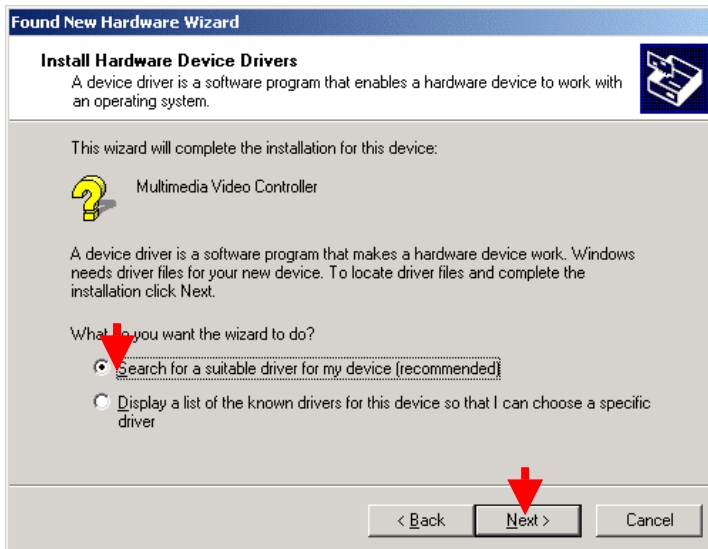
B. Installation :

1. How to install the hardware of PV-259L_T/TF :

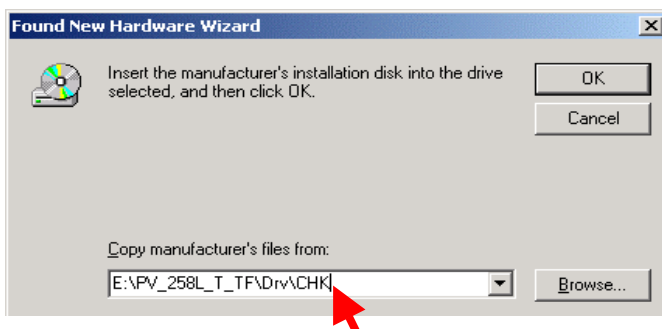
Please turn off the PC and then plug PV-259L_T/TF card & USB IR Receiver into available PCI & USB ports, and then turn on the PC.

2. Installing the driver of PV-259L_T/TF for Win™2000/XP :

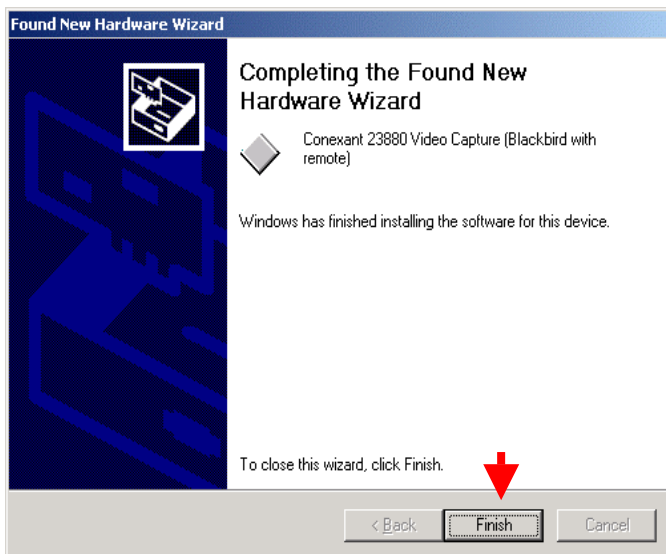
2.1 : After turn on the PC, the OS will detect the “Multimedia Video Controller”, please select “Search for a suitable driver for my device” and then click “Next” as below picture. For XP users, please select “Choose a specific driver from another path”.



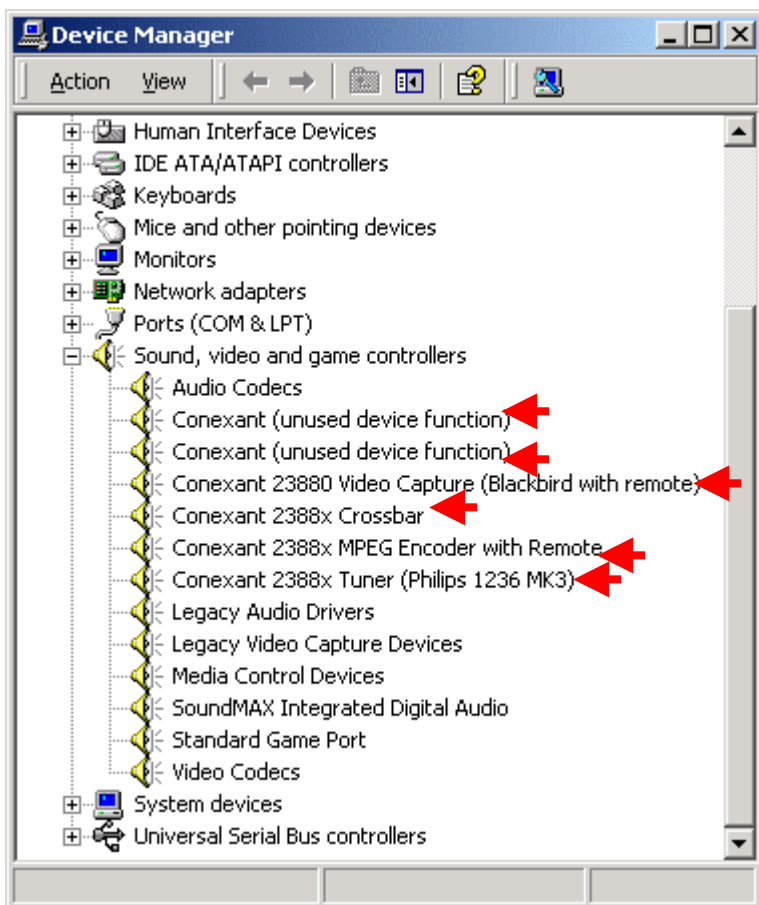
2.2 : Then put the Software CD into CDROM and nominate the driver path as : X:\PV259L_T_TF\Drv\CHK\ (assume the CDROM is X) as below picture.



2.3 : After above step, will show the “Conexant 23880 Video Capture(Blackbird with remote)” driver’s window . Please click ”Next” to continue and then click “Finish” to complete the driver installing.



2.4 : Besides “Conexant 23880 Video Capture(Blackbird with remote)” driver, still have other five drivers needs to do same as above installation. Please click “Next” & “Finish” will be okay to install all drivers. After all installation finish, please go Start Settings Control Panel System Hardware Device Manager Sound, Video And Game Controllers to check the driver list as below picture.



2.5 : After the drivers' installation of card, Win2K and WinXP supported the USB IR Receiver in operating system for auto-installing. Please click "Next" & "Finish" to complete the installation. After that, please go **Start** **Settings** **Control Panel** **System** **Hardware** **Device Manager** **Human Interface Devices** to check the driver list as below picture.

